



8. Tighten. Also we suggest apply some thread lock to the column bolt. Thread Lock and be purchased at any local hardware store.

9. Add (E)levers to base and make sure the table bases and spider are aligned the same

CARE & MAINTENANCE

GENERAL MAINTENANCE

As with any equipment, proper and periodic maintenance is necessary to ensure longevity of the product and customer satisfaction. To ensure you get the most out of your investment, please follow our recommended maintenance and care instructions.

We recommend that the products be examined every 30 days. Items requiring adjustments, showing any sign of structural failure, that have missing hardware or that show any cracks at the welds should be taken out of service immediately until repaired.

Loose screws should be tightened as required and missing or worn out foot caps must be replaced.

To obtain replacement parts, please contact your local representation or local dealer.

Furniture should be handled with care. When chairs are stacked, the stack should not be dragged. Stackable chairs should not be dropped or slammed down when being un-stacked. People should not rock backwards or stand on any emuamericas' item.

For storage, all furniture should be stored neatly, stacked to suggested height, and packed in a clean and dry area. Tables should not be flipped and stacked; any standing water needs to be removed to avoid damage to finish.

NOTE: Warranty may be voided if proper maintenance or care is not followed.

Full maintenance and care instructions for each product can be found on our website at www.emuamericas.com

PARTS/HARDWARE

We make available all parts, hardware and touch-up paint for the current product line at minimal cost.

ASSEMBLY INSTRUCTION

ZAK BASE #1364





(A) Spider X1



(B) Base X1



(D) Column X2



(C) Threaded Rod X2



(I) Coupler X1



(E) Levers X4



(F) Nut X4

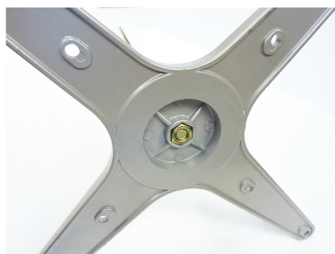


(G) Washer X3

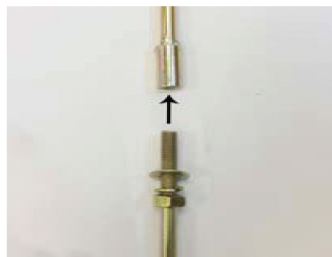


(H) Lock Washer X3

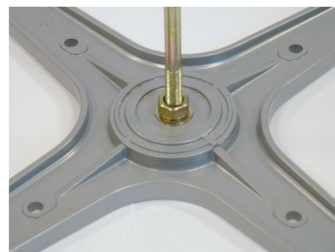
2. Place (F) nut into (A) spider



1. Take both threaded rods and attach them together, be sure to use (F) nut, (H) lock washer and (G) washer



3. Flip spider over and add (C) threaded rod adding (G) washer, (H) lock washer and (F) nut. Tighten

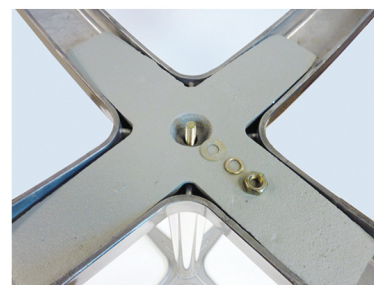
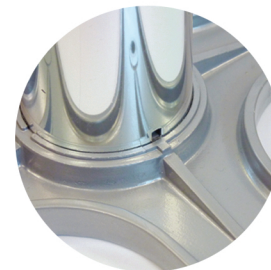


6. Then place the (B) base on (C) threaded rod and (D) column and making sure tab lines up with base.

4. Take both (D) columns and join them together with (I) coupler as shown



5. With spider on the ground, place (D) column on to (A) spider making sure tabs line up.



7. With (B) base on, place (G) washer, (H) lock washer and (F) Nut